




Aldea Dos Vientos

Aldea Dos Vientos

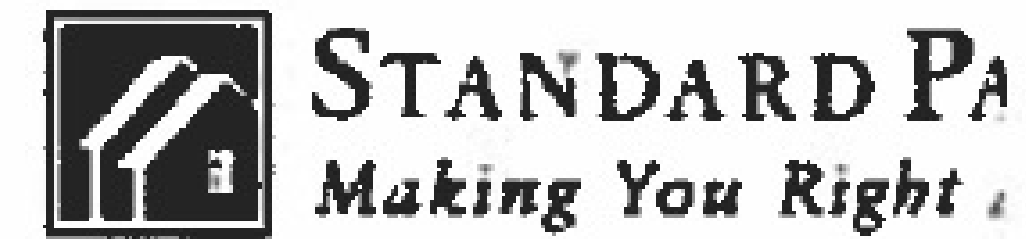
Standard Pacific reserves the right to change plans, specifications, materials, features and prices without notice. All plans, landscaping and elevation renderings are artistic representations and may vary in design and scale when compared to the actual architectural drawings and final product.

Copyright © 2006 Standard Pacific Homes. All rights reserved. Equal Housing Opportunity 

floorplans courtesy of:

 **holbrook**
Jim + Darlene | Realty Group
HolbrookRealtyGroup.com

kw WORLD CLASS
KELLERWILLIAMS REALTY
805-796-7653
DRE License # 00950584 & 0 640846



FIND Your New Home

FINANCE Your New Home

BUYING Your New Home

PERSONALIZE Your New Home



ALDEA DOS VIENTOS

Features

Introduction

Floorplans

Features

Location

Join The Interest List

Add to Favorites

Email a Friend

Mortgage Calculator

Awards & Recognition

Serving the Community

Aldea Home Features

Handsome Exterior

- Classic architecture
- Distinctive entry door
- Decorative stainless steel entry hardware
- Mission style shake roof
- Concrete driveway
- Sectional rollup garage door
- Automatic garage door opener with two transmitters

Interior Style

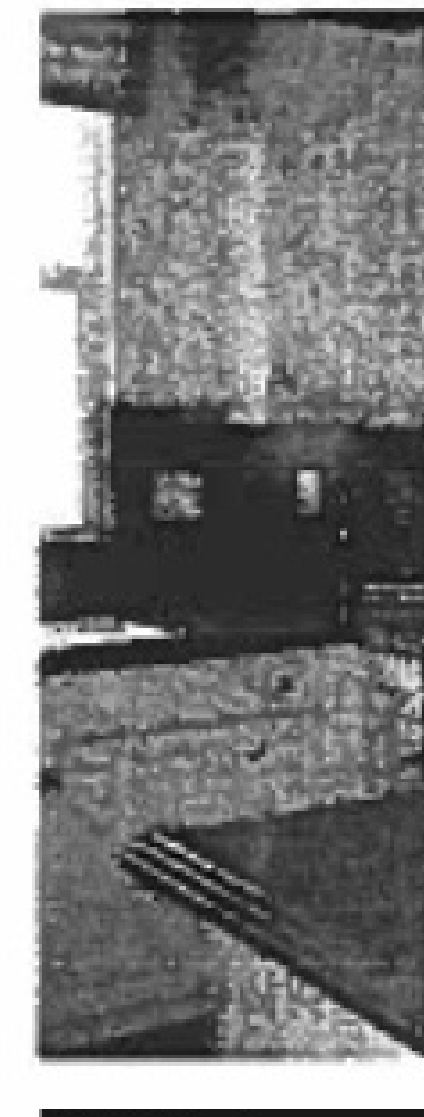
- Ceramic tile or wood entry floor
- Raised panel interior doors
- Gas fireplace
- Carpet throughout (except kitchen, baths, and laundry area)
- Pre-wire for RG 6-TV, Category 5 data/telephone
- Indoor laundry

Gourmet Kitchen

- Ceramic tile counter top
- Hand-finished beech cabinetry
- Spacious pantry
- Appliances include:
 - Electric self-cleaning oven*
 - Microwave*
 - Sealed gas, four burner, cooktop*
 - Dishwasher*
- Refrigerator area plumbed for icemaker
- Recessed lighting fixtures
- Under cabinet task lighting

Elegant Master Suites

- Double sinks
- Ceramic tile Pullman top
- Distinctive fixtures
- Full-width vanity mirror
- Oval tub
- Separate commode area



Spacious walk in closet
Recessed lighting

Energy Efficiency

Water saving showerheads
Low flow toilets
Seven day programmable digital thermostat
Pilotless automatic ignition system FAU
Pilotless automatic ignition system cooktop
High efficiency water heater
High efficiency furnace
12 Seer air conditioner - Quiet
R 30 Ceiling insulation
R 13 Exterior wall insulation
Glass fireplace doors with chimney damper
All exterior house doors weather-stripped
Vinyl dual pane windows with Low E glass

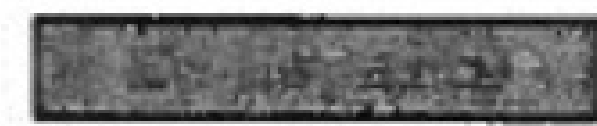
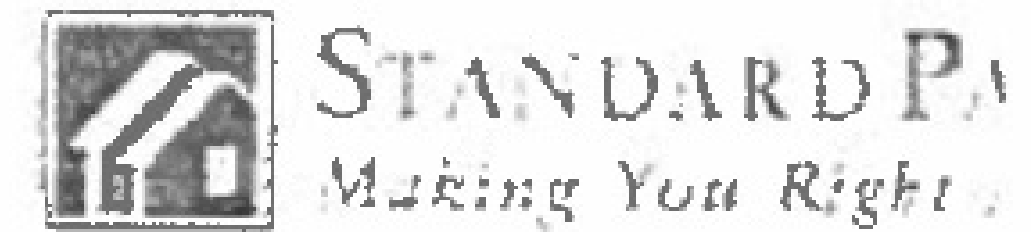
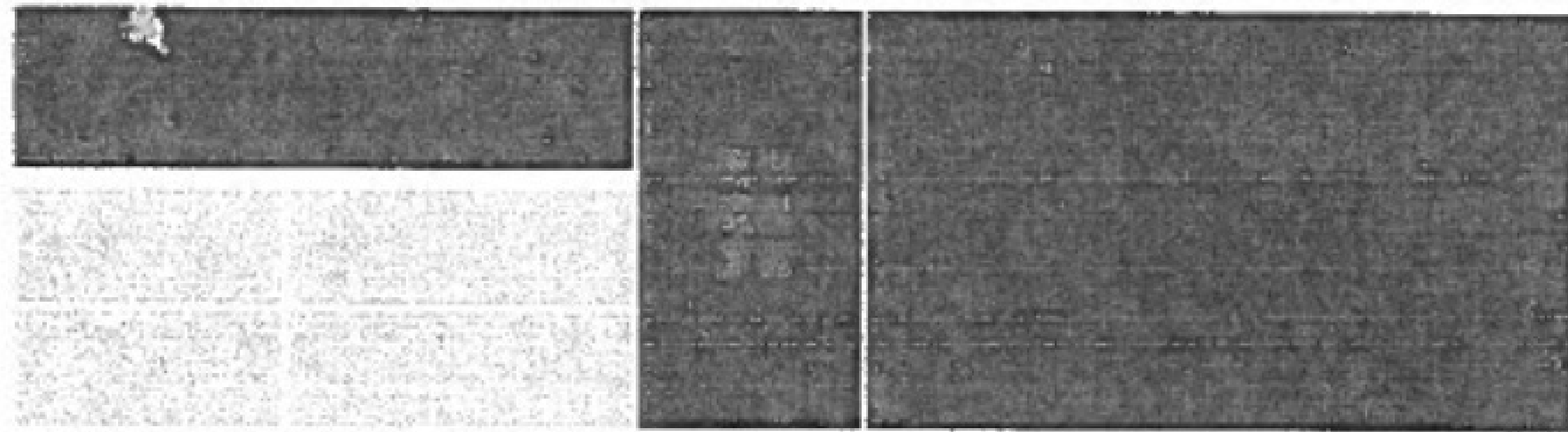
Added Features

Back-lit address for easy identification
Smoke detectors
Garage door motion sensor
Security system pre-wire
Spinklers

Community Amenities

Two private community pools
Recreation Center
Walking Paths
Shopping adjacent

Copyright © 2006 Standard Pacific Homes. All Rights Reserved. Privacy Policy. Terms and Conditions.



ALDEA DOS VIENTOS | Location

[← BACK to Regional Search](#)

[Introduction](#)

[Floorplans](#)

[Features](#)

[Location](#)

[Join The Interest List](#)

[Add to Favorites](#)

[Email a Friend](#)

[Mortgage Calculator](#)

[Awards & Recognition](#)

[Serving the Community](#)

Sales Gallery:

220 Via Antonio
Thousand Oaks, CA
91320
(805)376-9520
adodd@stanpac.com

Sales Representatives:

Debbie Vasquez
and
Linda Bernard

Driving Directions:

Coming South Bound on the 101 towards Newbury Park/Thousand Oaks
Exit on Wendy Drive
Left on Wendy Drive
Right on Borchard Road
Left on Via Las Brisas
Left on Via Rio
Left on Via Mirabella
Left on Via Antonio

Coming North Bound on the 101 towards Newbury Park/Thousand Oaks
Exit on Borchard Road
Right on Borchard Road
Left on Via Las Brisas
Left on Via Rio
Left on Via Mirabella
Left on Via Antonio

[EMAIL This Neighborhood](#)

Sales Gallery Hours:

New Home Gallery Hours:
Mondays from 1:00 pm to 5:30 pm
Tuesday thru Friday from 10:00 am to 5:30 pm

Model Homes are unavailable for viewing.

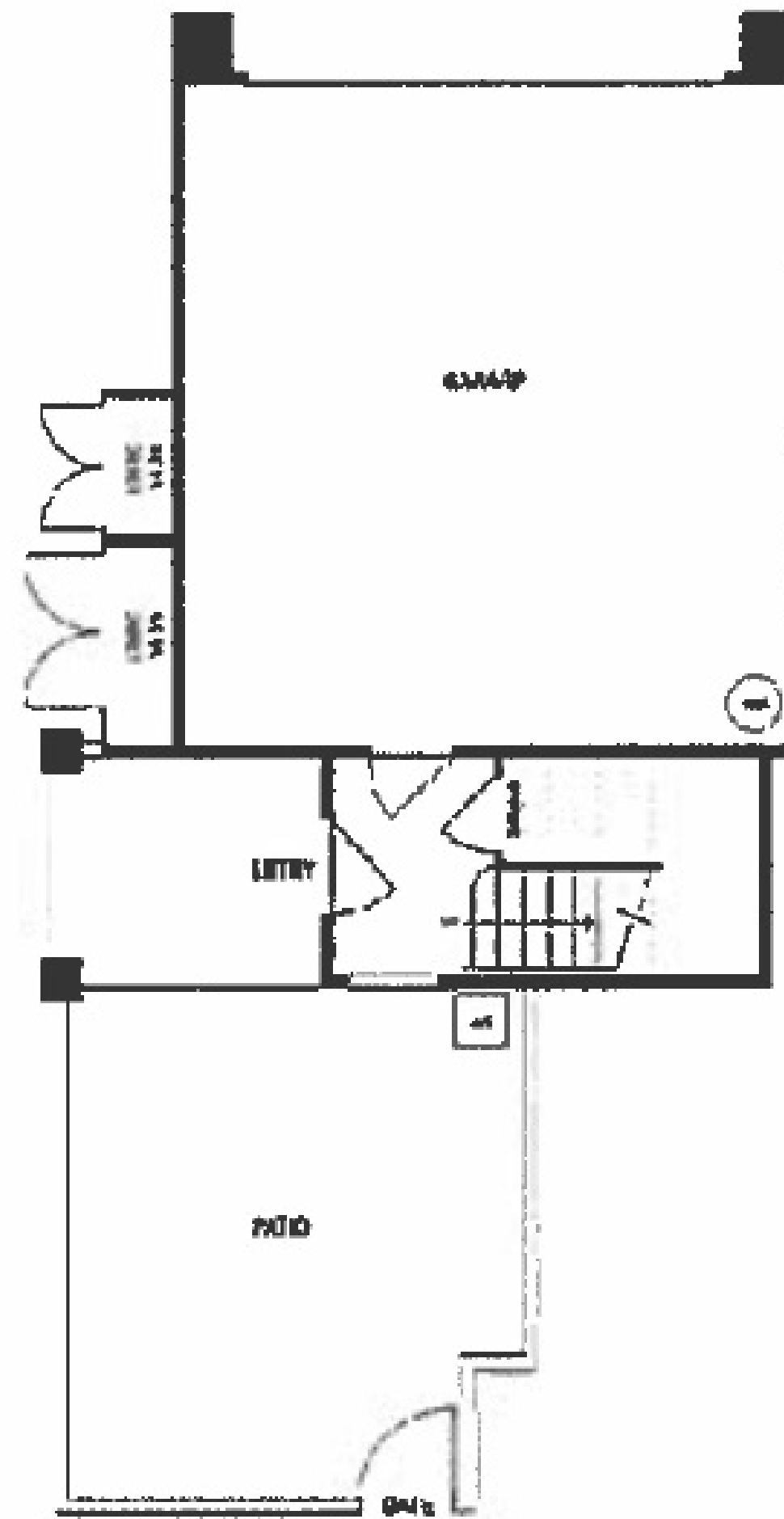


Copyright © 2006 Standard Pacific Homes. All Rights Reserved. Privacy Policy. Terms and Conditions.

Plan 1 ~ Sold Out!

2 Bedrooms • 2 Bathrooms • 1226 Square Feet

Charming




First Floor




Second Floor

220 Via Antonio CA, 91320 (805)376-9520

Standard Pacific reserves the right to change plans, specifications, materials, features and prices without notice. All plans, landscaping and elevation renderings are artistic representations and may vary in design and scale when compared to the actual architectural drawings and final product.

Copyright © 2006 Standard Pacific Homes. All rights reserved. Equal Housing Opportunity 

floorplans courtesy of:

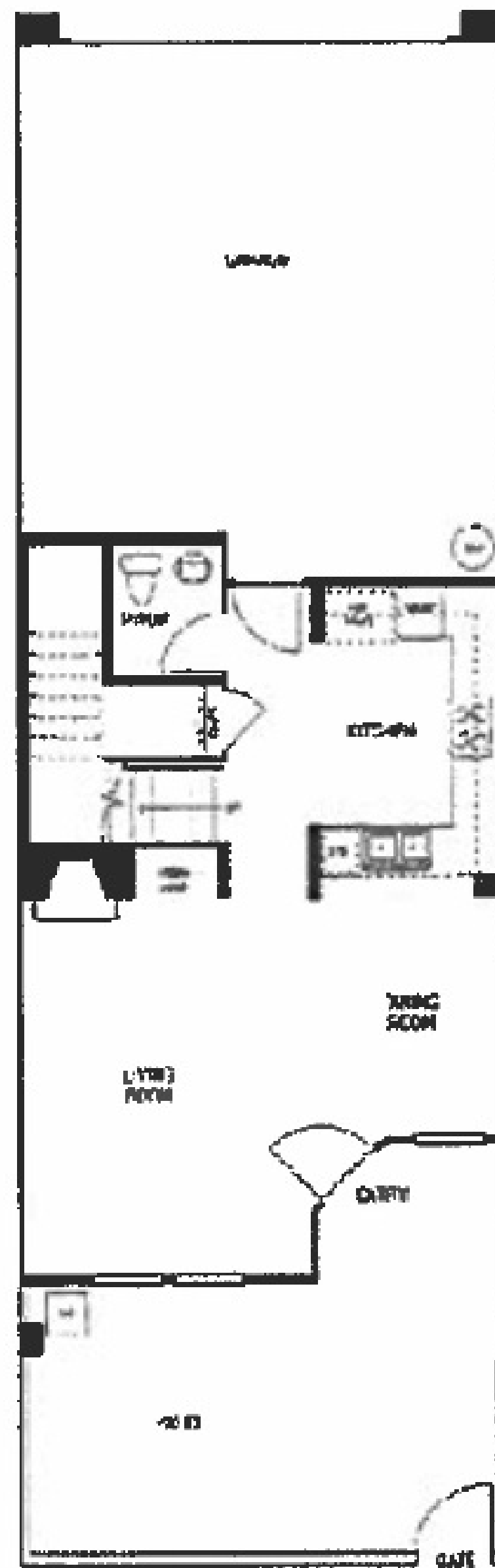
 holbrook
Jim • Darlene | Realty Group
HolbrookRealtyGroup.com

 kw WORLD CLASS
KELLERWILLIAMS REALTY
805-796-7653
DRE License # 00950584 & 0 640846

Plan 2 ~ Sold Out!

2 Bedrooms • 2.5 Bathrooms • 1378 Square Feet

Great use of space




First Floor



Second Floor

220 Via Antonio CA, 91320 (805)376-9520

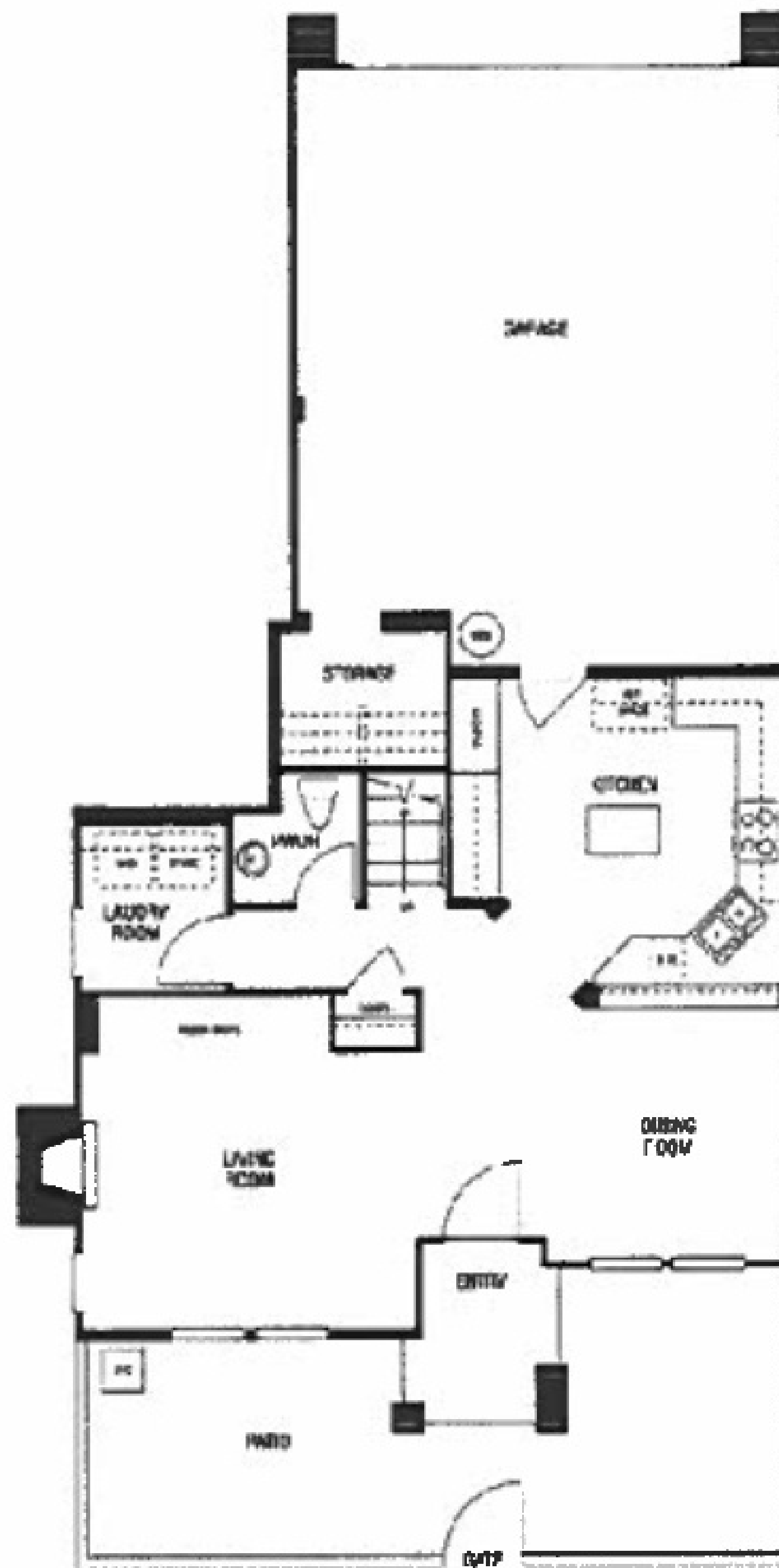
Standard Pacific reserves the right to change plans, specifications, materials, features and prices without notice. All plans, landscaping and elevation renderings are artistic representations and may vary in design and scale when compared to the actual architectural drawings and final product.

Copyright © 2006 Standard Pacific Homes. All rights reserved. Equal Housing Opportunity 

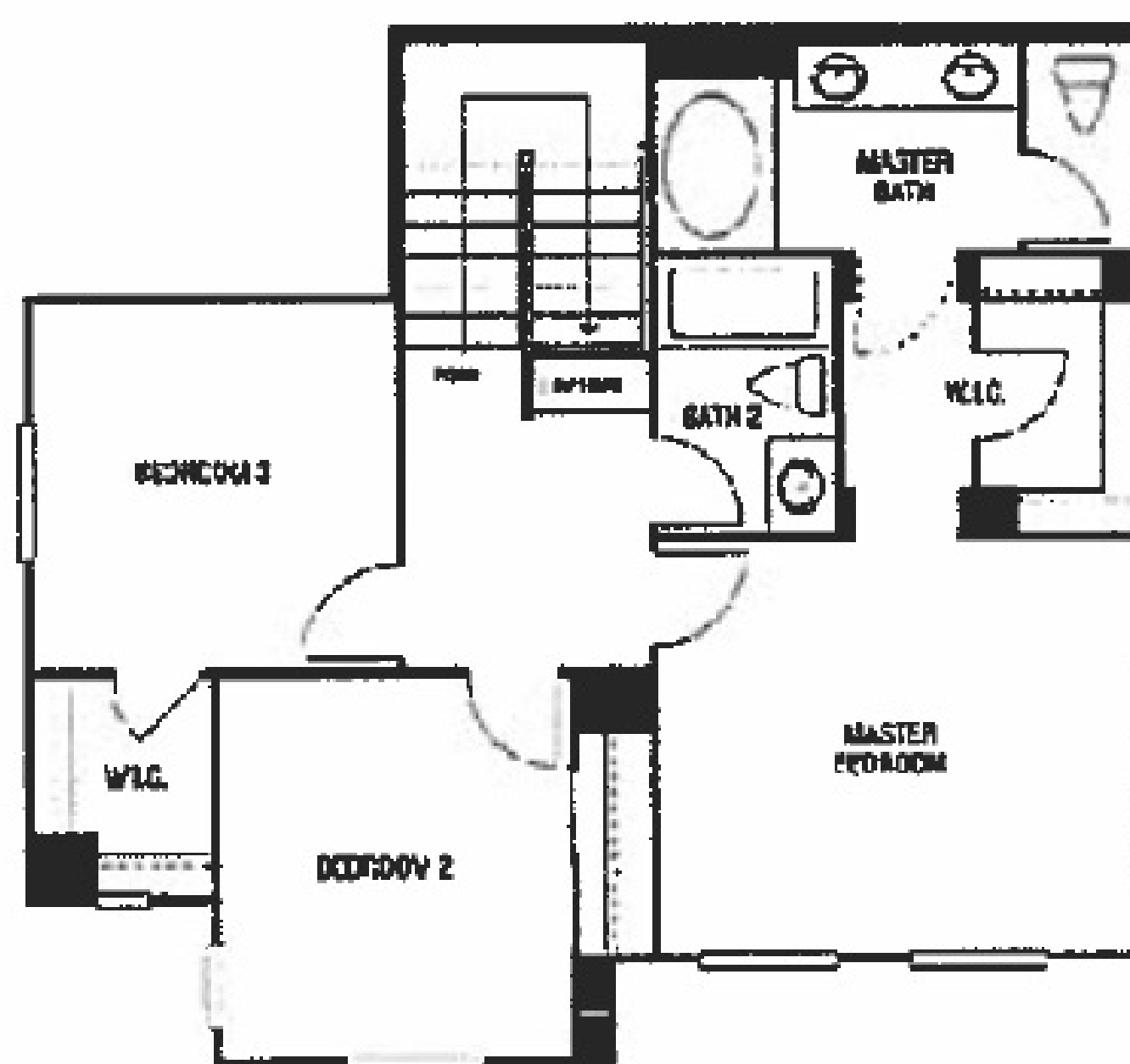
Plan 3 ~ Sold Out!

3 Bedrooms • 2.5 Bathrooms • 1524 Square Feet

Beautiful




First Floor



Second Floor

220 Via Antonio CA, 91320 (805)376-9520

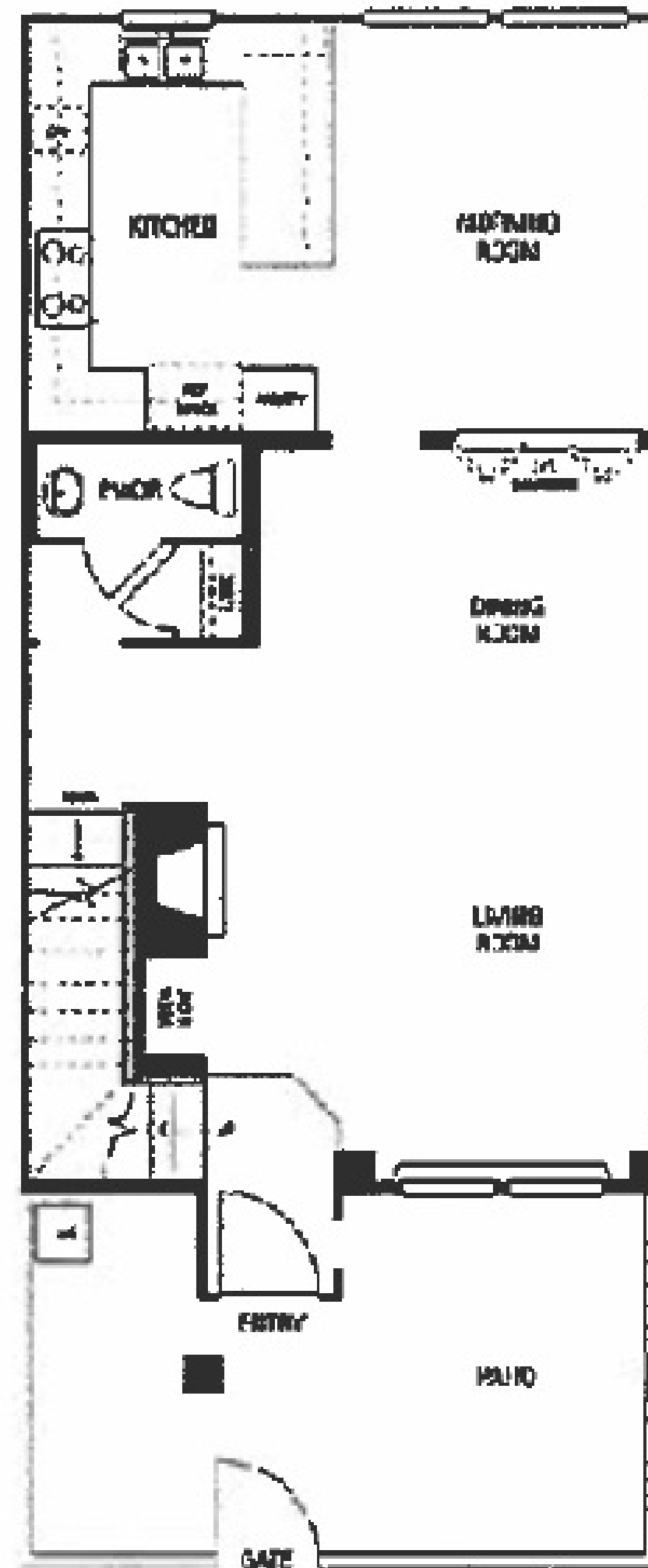
Standard Pacific reserves the right to change plans, specifications, materials, features and prices without notice. All plans, landscaping and elevation renderings are artistic representations and may vary in design and scale when compared to the actual architectural drawings and final product.

Copyright © 2006 Standard Pacific Homes. All rights reserved. Equal Housing Opportunity 

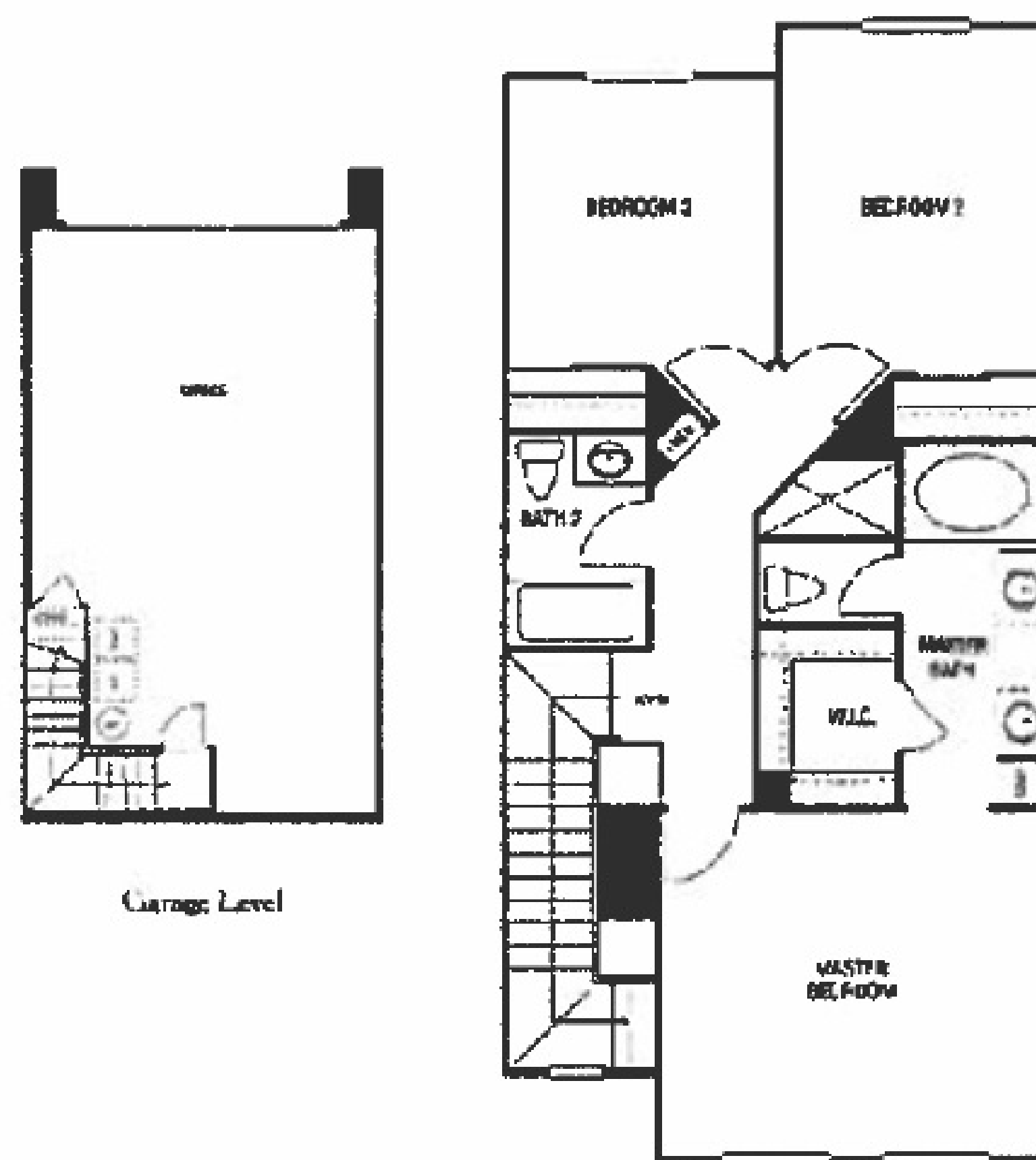
Plan 4 - Sold Out!

3 Bedrooms • 2.5 Bathrooms • 1672 Square Feet

Great floor plan



First Floor




Second Floor

220 Via Antonio CA, 91320 (805)376-9520

Standard Pacific reserves the right to change plans, specifications, materials, features and prices without notice. All plans, landscaping and elevation renderings are artistic representations and may vary in design and scale when compared to the actual architectural drawings and final product.

Copyright © 2006 Standard Pacific Homes. All rights reserved. Equal Housing Opportunity 

floorplans courtesy of:

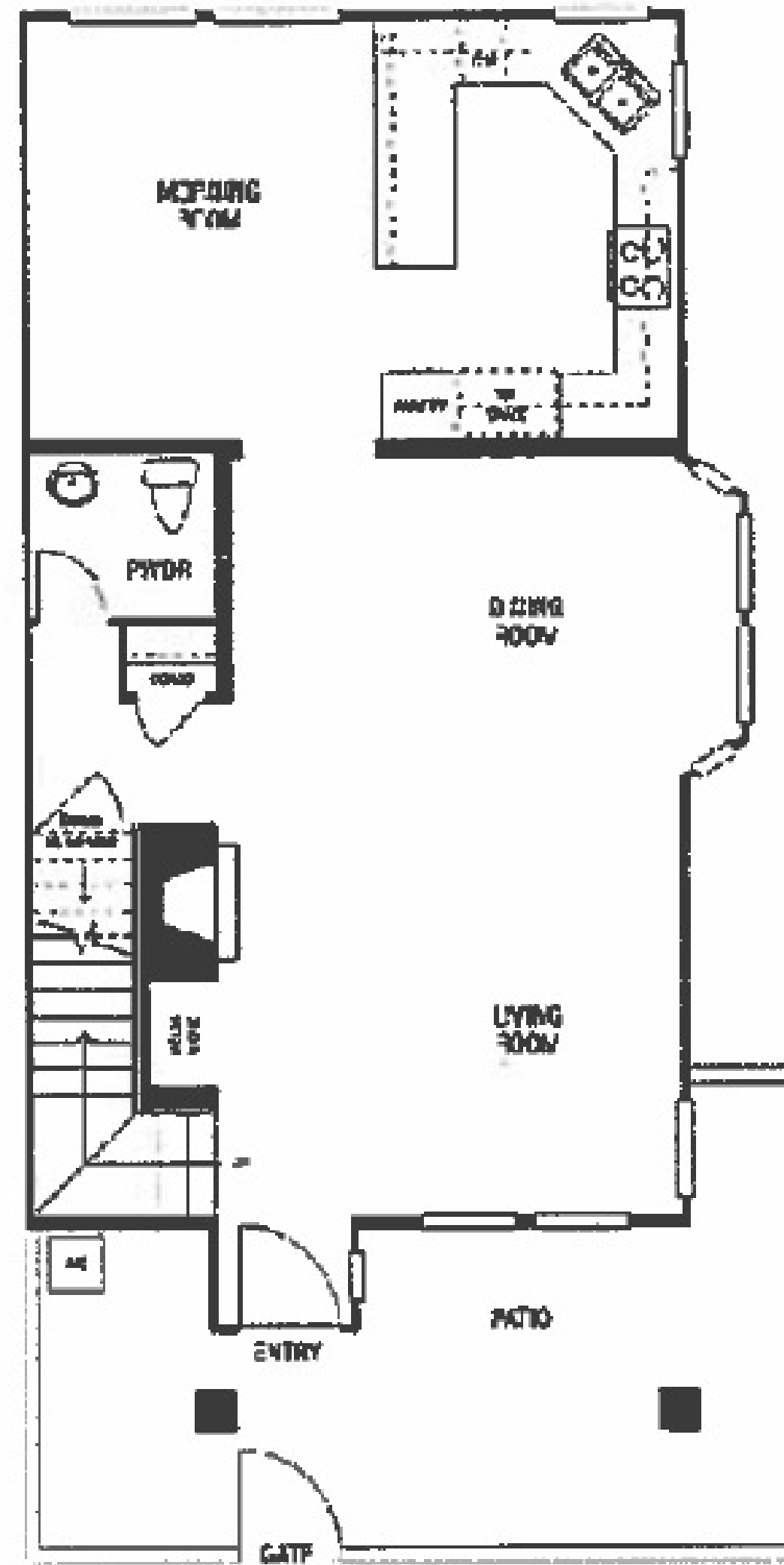
 holbrook
Jim • Darlene | Realty Group
HolbrookRealtyGroup.com

 kw WORLD CLASS
KELLER WILLIAMS REALTY
805-796-7653
DRE License # 00950584 & 0 640846

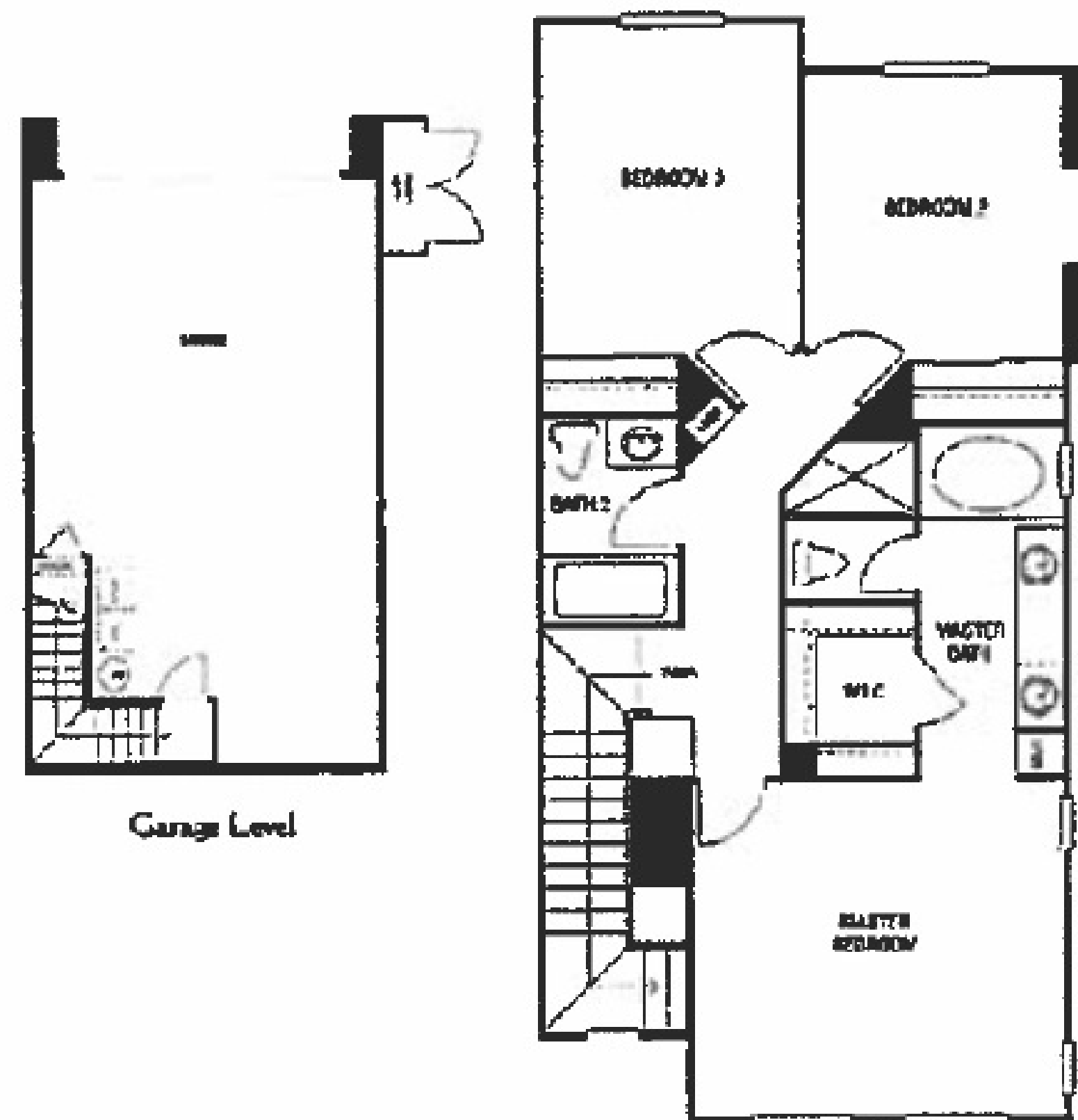
Plan 5 ~ Sold Out!

3 Bedrooms • 2.5 Bathrooms • 1690 Square Feet

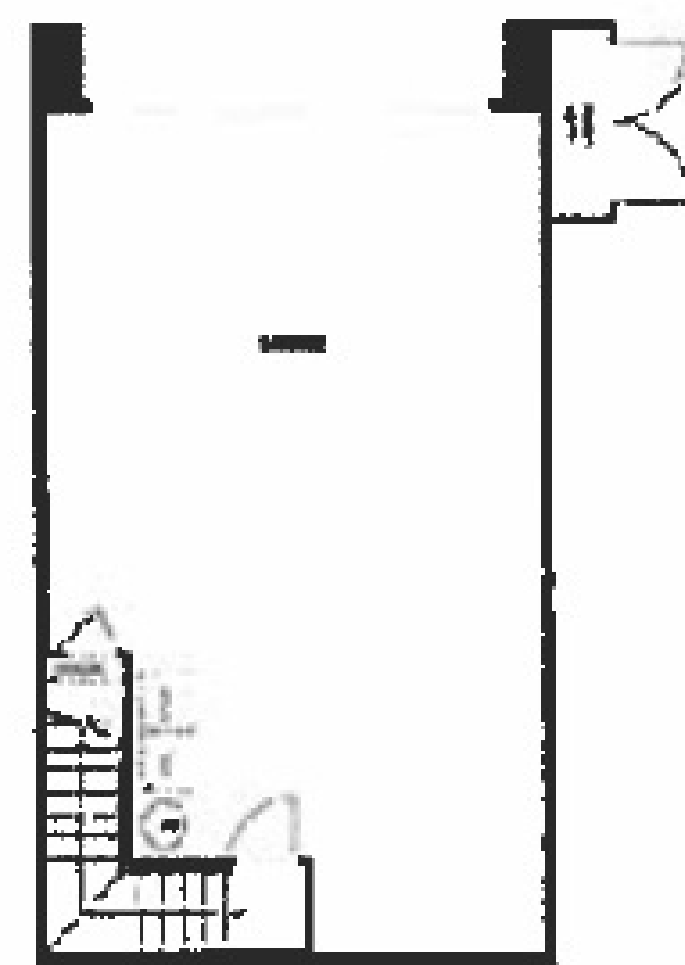
Includes a morning room!



First Floor




Second Floor




Garage Level

220 Via Antonio CA, 91320 (805)376-9520

Standard Pacific reserves the right to change plans, specifications, materials, features and prices without notice. All plans, landscaping and elevation renderings are artistic representations and may vary in design and scale when compared to the actual architectural drawings and final product.

Copyright © 2006 Standard Pacific Homes. All rights reserved. Equal Housing Opportunity 

floorplans courtesy of:

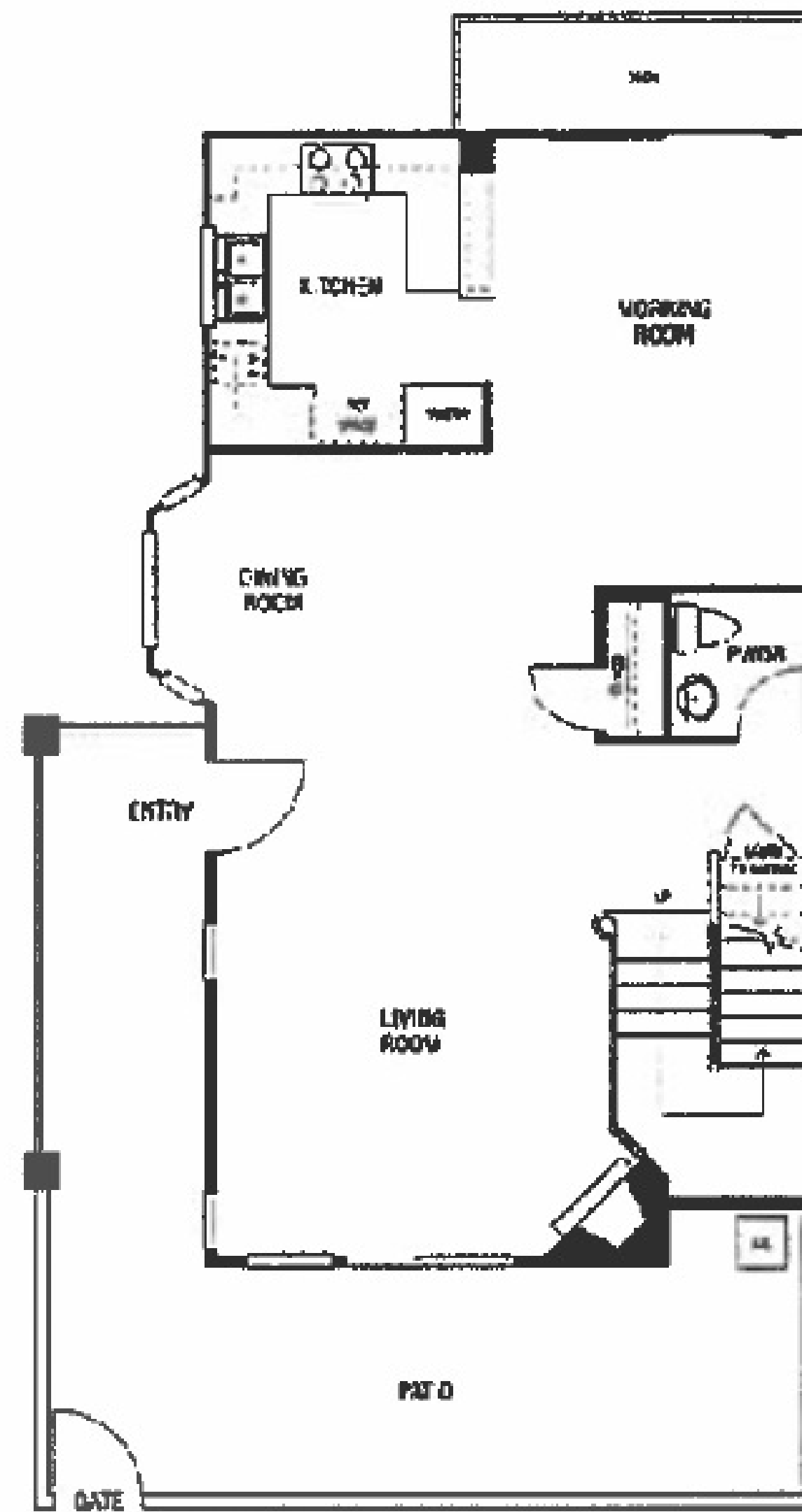
 **holbrook**
Jim • Darlene | Realty Group
HolbrookRealtyGroup.com

kw WORLD CLASS
KELLERWILLIAMS REALTY
805-796-7653
DRE License # 00950584 & 0 640846

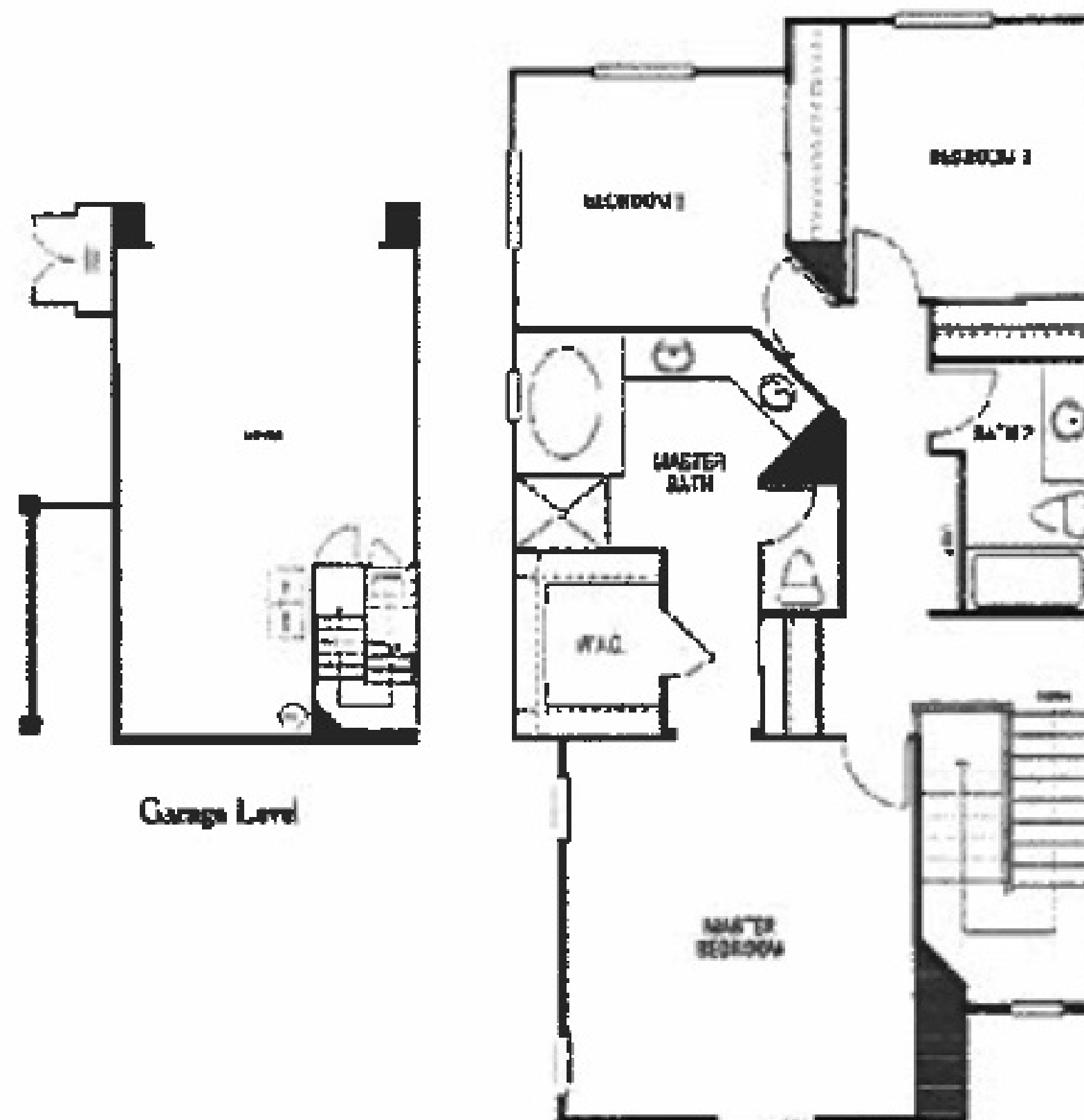
Plan 6 ~ Sold Out!

3 Bedrooms • 2.5 Bathrooms • 1867 Square Feet

Perfect for a growing family



First Floor




Second Floor

220 Via Antonio CA, 91320 (805)376-9520

Standard Pacific reserves the right to change plans, specifications, materials, features and prices without notice. All plans, landscaping and elevation renderings are artistic representations and may vary in design and scale when compared to the actual architectural drawings and final product.

Copyright © 2006 Standard Pacific Homes. All rights reserved. Equal Housing Opportunity 

floorplans courtesy of:

 holbrook
Jim • Darlene | Realty Group
HolbrookRealtyGroup.com

 kw WORLD CLASS
KELLERWILLIAMS REALTY
805-796-7653
DRE License # 00950584 & 0 640846