


The Haciendas

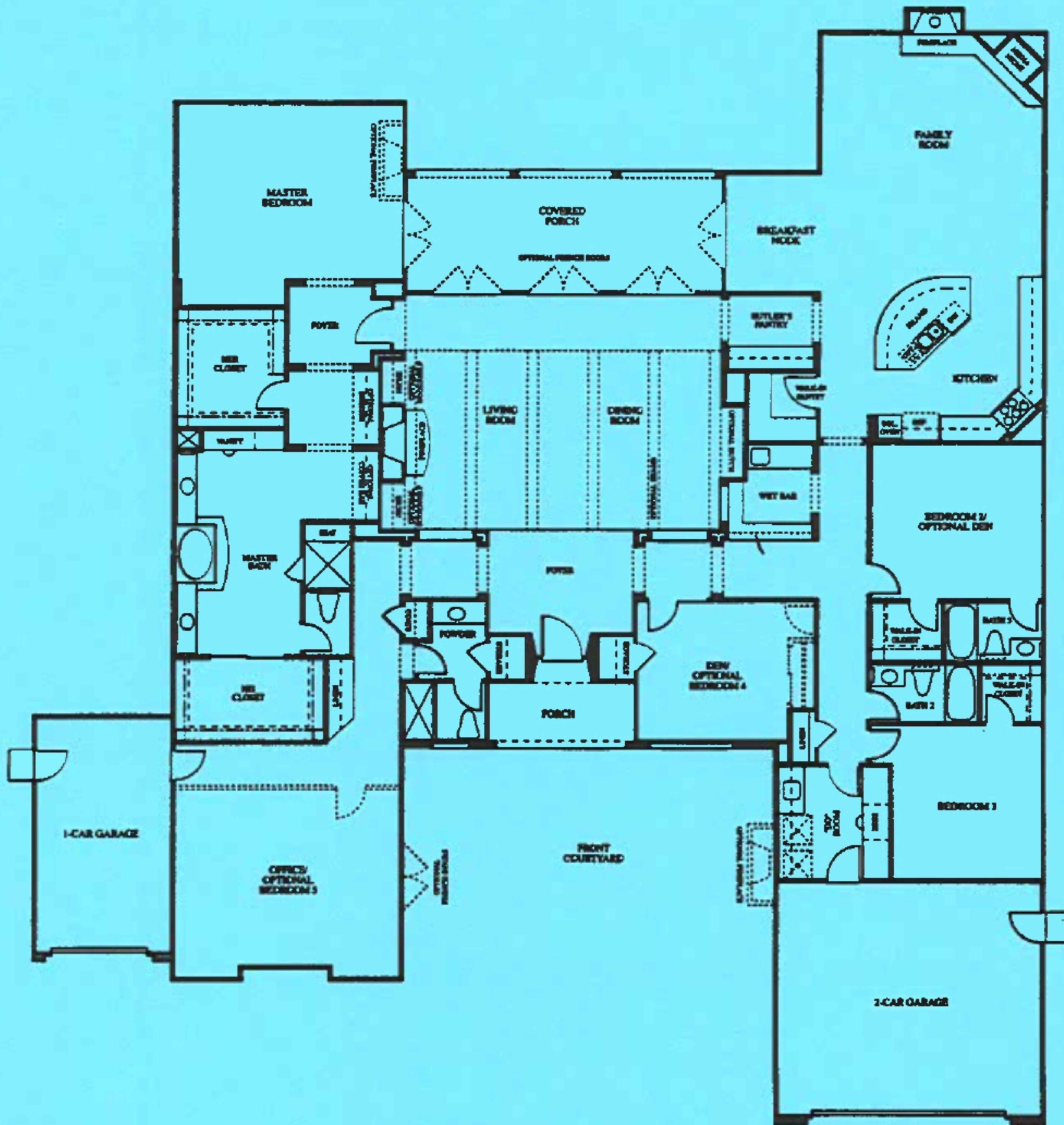


floorplans courtesy of:

 **holbrook**
Jim + Darlene | Realty Group
HolbrookRealtyGroup.com

KW WORLD CLASS
KELLERWILLIAMS REALTY
805-796-7653
DRE License # 00950584 & 0 640846

RESIDENCE ONE



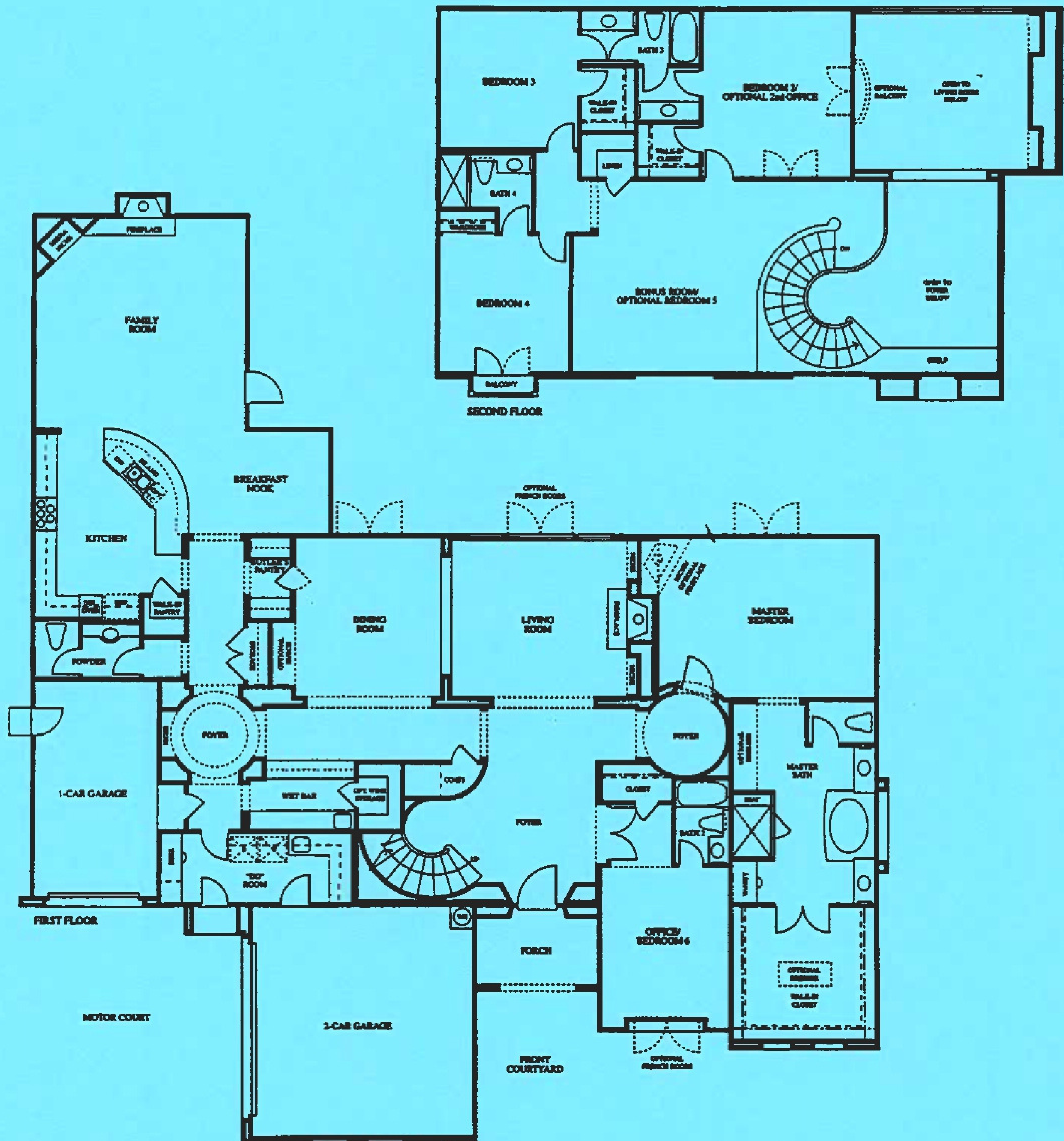
- 4,320 square feet • Single-story • 3 bedrooms • 4 bathrooms • Den • Office • Family room • Living room
- Formal dining room • Island kitchen • Breakfast nook • Butler's pantry • Wet bar
- Optional bedroom 4 • Optional bedroom 5 • 3-car garage

floorplans courtesy of:

holbrook
 Jim • Darlene | Realty Group
 HolbrookRealtyGroup.com

KW WORLD CLASS
 KELLERWILLIAMS REALTY
 805-796-7653
 DRE License # 00950584 & 0 640846

RESIDENCE TWO



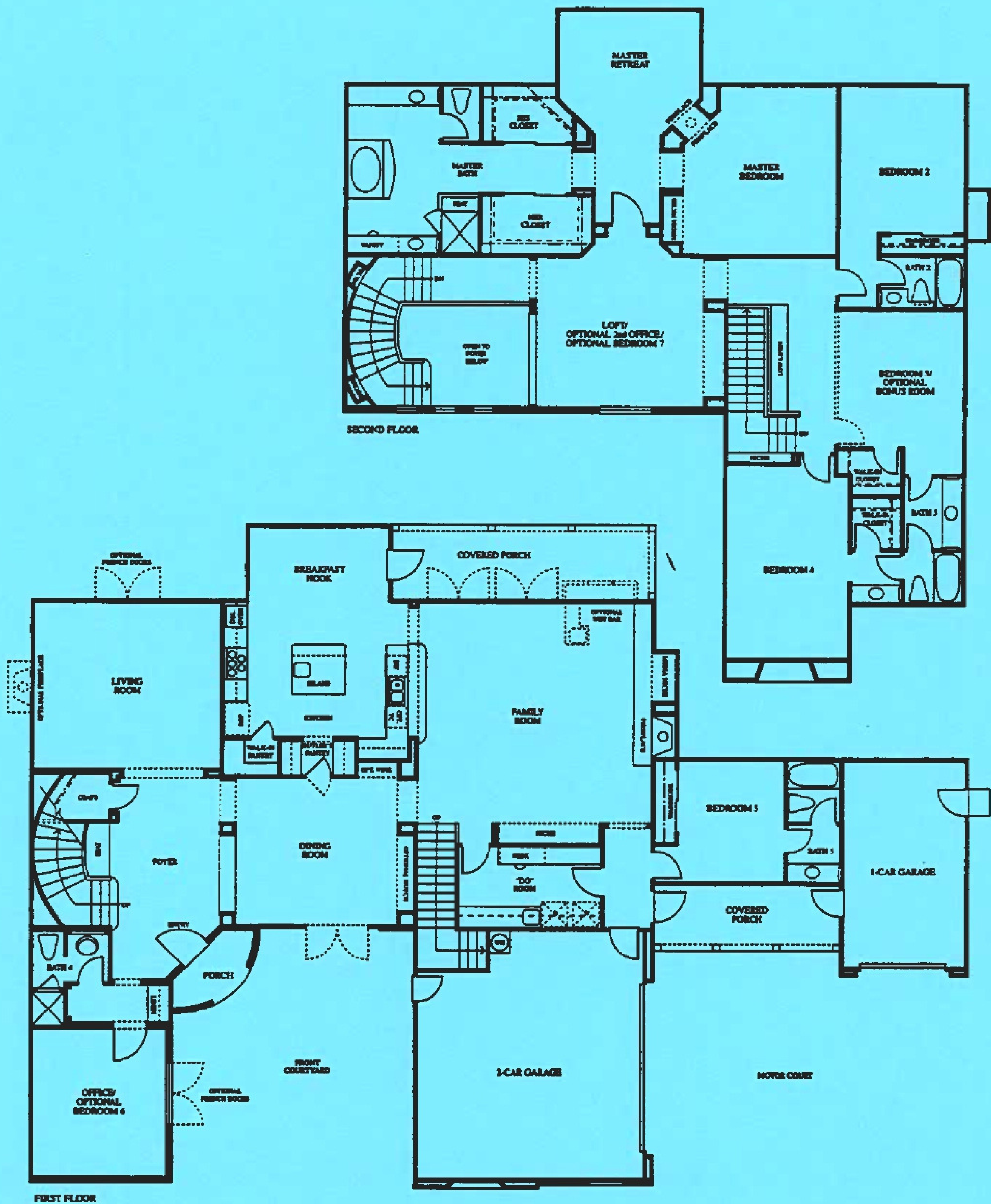
- 4,710 square feet • 4 bedrooms • 4 1/2 bathrooms • Downstairs master suite • Office • Bonus room
- Family room • Living room • Formal dining room • Island kitchen • Breakfast nook
- Butler's pantry • Wet bar • Optional bedroom 5 • Optional bedroom 6 • 3-car garage

floorplans courtesy of:

holbrook
 Jim • Darlene | Realty Group
 HolbrookRealtyGroup.com

KW WORLD CLASS
 KELLERWILLIAMS REALTY
 805-796-7653
 DRE License # 00950584 & 0 640846

RESIDENCE THREE



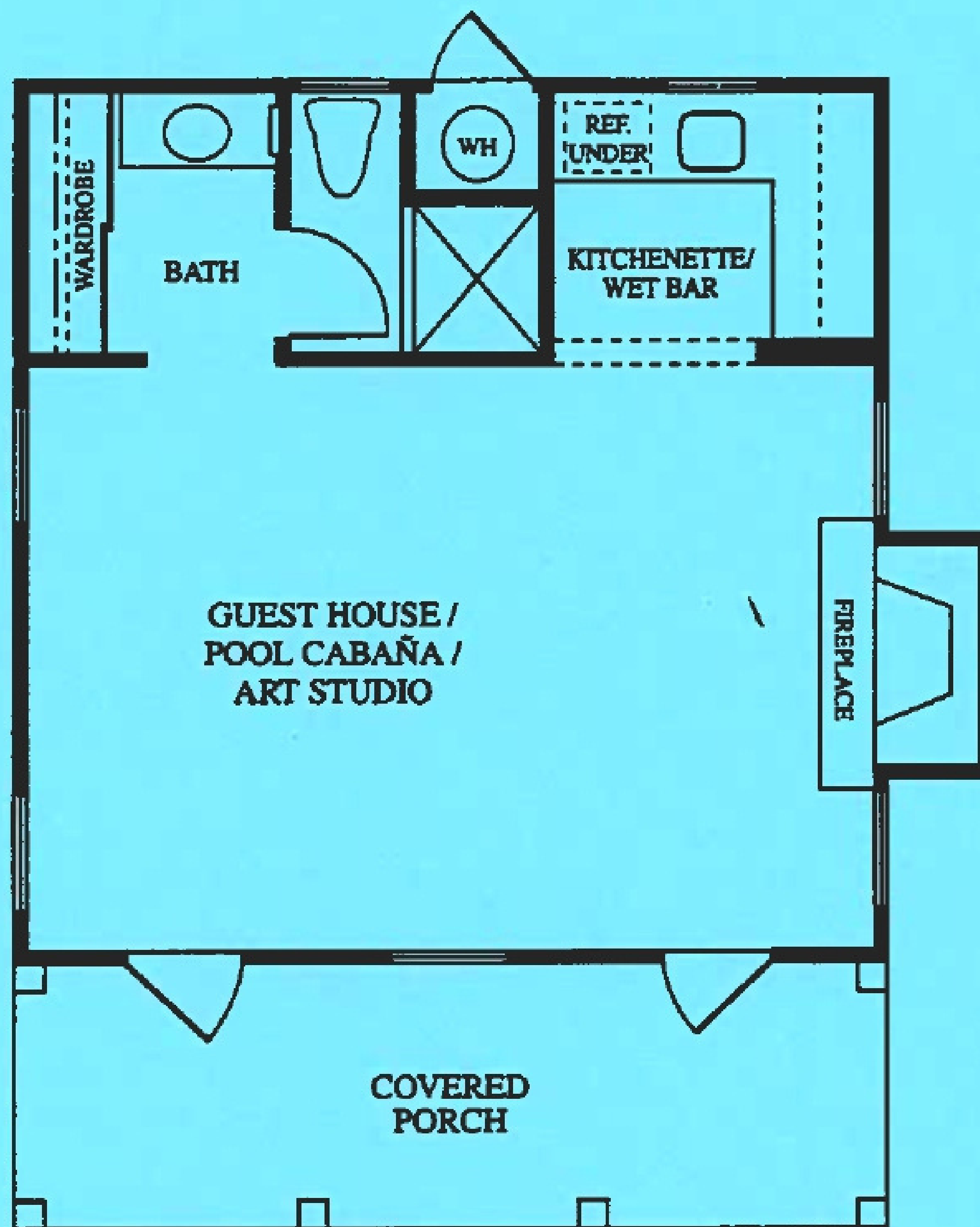
- 4,885 square feet • 5 bedrooms • 5 bathrooms • Office • Loft • Master retreat • Family room
- Living room • Formal dining room • Island kitchen • Breakfast nook • Butler's pantry
- Optional bedroom 6 • Optional bedroom 7 • Optional wet bar • Optional bonus room • 3-car garage

floorplans courtesy of:

holbrook
Jim • Darlene | Realty Group
HolbrookRealtyGroup.com


KW WORLD CLASS
KELLERWILLIAMS REALTY
805-796-7653
DRE License # 00950584 & 0 640846

DETACHED GUEST HOUSE



• 443 square feet • 1 bedroom • 1 bath • Kitchenette / Wet bar • Fireplace • Covered porch

floorplans courtesy of:

 **holbrook**
Jim • Darlene | Realty Group
HolbrookRealtyGroup.com

KW WORLD CLASS
KELLERWILLIAMS REALTY
805-796-7653
DRE License # 00950584 & 0 640846



refined architecture

- Early California/Spanish Colonial Revival architecture • 16,000 to 34,000 square foot pad areas
- Front courtyards • Motor courts • Covered rear porches (Plans 1 and 3) • Expansive side yards
- Rounded turrets and cupolas (Elevation B) • Eight-foot-high, Southwest-distressed front doors
 - Three-car garages with sectional, automatic garage doors and dual controls

palatial interiors

- First-floor master suite (Plans 1 and 2) • Wet bars (Plans 1 and 2)
- Oversized, light-inviting windows throughout • Romantic wood-burning fireplaces
 - "Do" room for laundry and practical convenience • Pre-wired for security system
- Pre-wired for cable TV and phones • Large home office, pre-wired for fax and modem
 - Plush carpeting throughout living areas • Ceramic tile entry
- No-wax, resilient flooring in kitchen, baths, and "Do" room • Spacious secondary bedroom suites


private master domain

- Secluded bed chamber • Cozy gas fireplace (Plan 3) • Direct access to courtyard (Plans 1 and 2)
 - Private seating area • Oval soaking tub with ceramic tile surround
- Separate, ceramic tile shower with architectural glass block • Compartmentalized water closet
 - Dual china basins with designer faucets • Sit-down vanity with oversized mirror
 - Spacious walk-in closets • Mirrored wardrobe doors (Plan 3)

classical kitchens

- Island seating bar • Separate breakfast nook • Honey Oak cabinetry with recessed panels
 - Ceramic tile countertops • Dual-compartment, cast iron sink
- General Electric® built-in, white-on-white, Profile appliances • Double oven with upper convection
 - Five-burner, built-in gas cooktop with slide-out hood • 1.6 cubic foot, built-in microwave oven
 - Spacious, walk-in pantry • Butler's pantry • Kitchen island • Vegetable sink (Plan 3)

floorplans courtesy of:

 **holbrook**
Jim • Darlene | Realty Group
HolbrookRealtyGroup.com

KW WORLD CLASS
KELLERWILLIAMS REALTY
805-796-7653
DRE License # 00950584 & 0 640846

customized options

- Security system • Intercom system • Garage key access pad
 - Ceiling fans • Crown molding
 - Decorator ceiling beams (Plans 1 and 2)
- Customized interior stair handrails, treads, risers, and balusters
 - Master bedroom fireplace (Plans 1 and 2)
 - Living room fireplace (Plan 3)
- Custom tile, natural stone, and ledgerstone fireplace surrounds and hearth
 - Custom natural stone, custom tile, and Corian countertops
 - Maple cabinets with glass doors and various stain options
- Wine storage racks (Plans 2 and 3) • Dual dishwashers (Plan 3)
 - Trash compactor in kitchen • GE® Profile refrigerator
 - GE® Monogram appliances • Black appliances
 - Viking® appliances • Kohler® kitchen pull-out faucet
 - Lasco Whirlpool® tub in master bath
 - Custom natural stone, and custom tile showers
 - Tub enclosures • Decorator mirrors
 - Customized closet designs
 - Built-in bookshelves and paneling in home office
- Custom built-in bookshelves and cabinetry packages
 - Additional telephone, cable, and electrical outlets
 - Additional flush can ceiling lighting
 - Custom flooring • Specialized painting
 - Exterior French doors • Wet bar (Plan 3)
 - Media niche built-in cabinetry
 - Surround Sound home theater systems


detached casita

Optional detached guest house with kitchenette, bathroom, and fireplace that can be custom-designed as a private office, art studio, or pool cabaña

In a continuing process of product refinement and improvement, EPAC reserves the right to change the floorplans, features, prices, and specifications without notice. See sales representatives for details. Renderings shown are artists' concepts.



floorplans courtesy of:

 **holbrook**
Jim • Darlene | Realty Group
HolbrookRealtyGroup.com

KW WORLD CLASS
KELLERWILLIAMS REALTY
805-796-7653
DRE License # 00950584 & 0 640846